

How To Collect And Beam Q330 Status And Configuration Files  
For use with version 1.39t of the Q330 control program  
2003.272

1. Create the document files on the Clie by starting the Q330 control program and tapping on the Commands button. This will bring up the commands menu. Select "Make Docfile" from the menu.



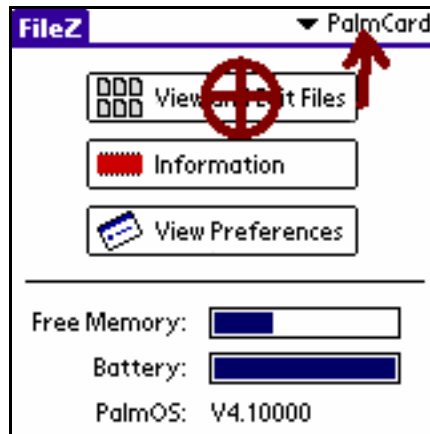
2. The Q330 control program will make up a default name of the current date and the Q330 ID number. If this is alright then tap the OK button.



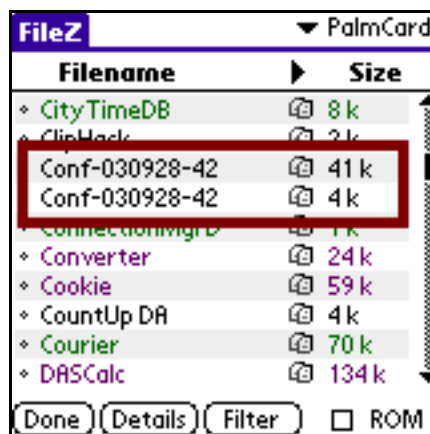
3. When the Q330 control program has finished quit it (by tapping the Applications button -- the "house" icon to the left of the Grafitti area). Check that the Launcher category setting in the upper right-hand corner of the display is set to "All" and find the icon for the application FileZ. Start the FileZ program by tapping on its icon.



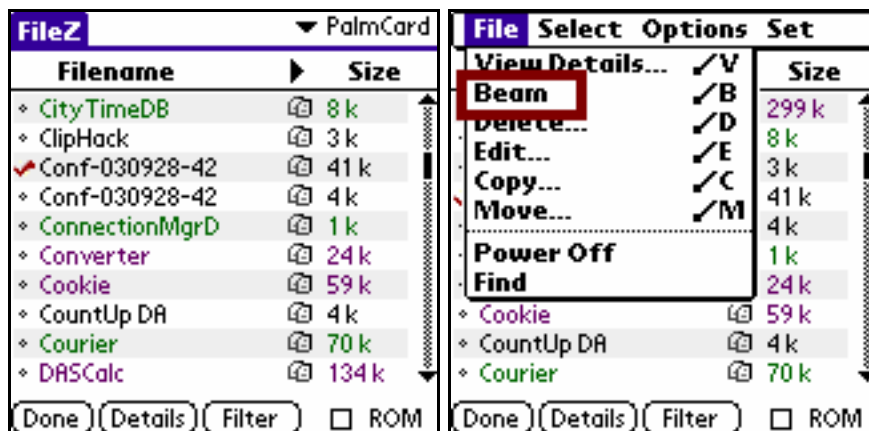
4. Check that the location selection in the upper right-hand corner of the display is set to PalmCard and tap the "View and Edit Files" button.



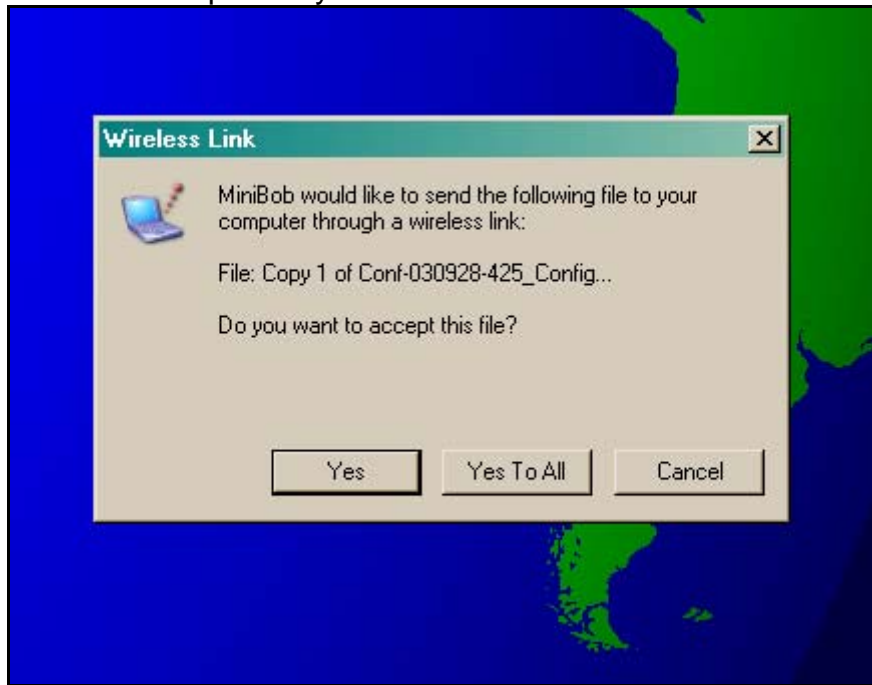
5. Scroll down the list of files on the Clie until files beginning with the file name you selected in step 2 show up. The file names produced by the Q330 control program are too long for the FileZ program display, so you will only see about the first 14 characters. The file that is 41K in size contains the Q330 configuration, and the 4K file contains the Q330 status information.



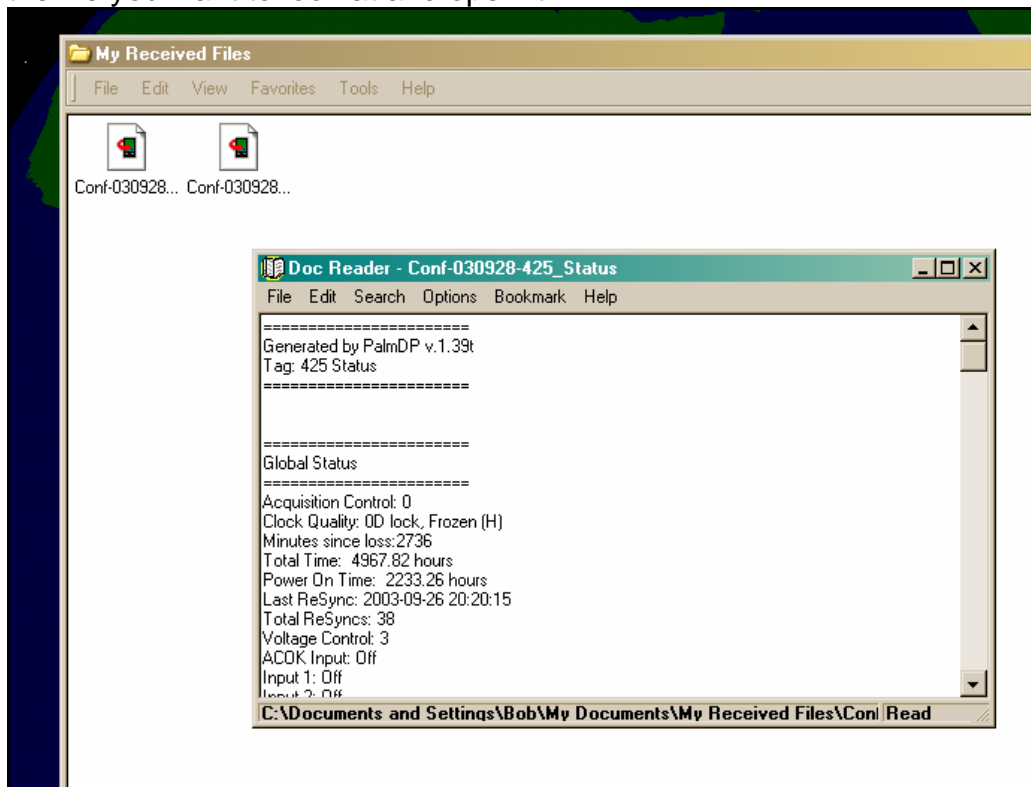
6. Select one of the files by tapping on it. A small red check mark will be displayed. Tap on the "FileZ" tab in the upper left-hand corner of the display and the File menu will drop down. Point the IR port on the Clie at the IR port on the laptop (a small dark area near the audio jacks on the left side of the ThinkPad A31 computer). Select Beam from the menu.



7. A dialog box like the one below should appear on the laptop display. Click on the Yes button to start the transfer. Since these files are small, transferring them should only take a few seconds. Repeat step 6 and 7 for the other file (or any other files you wish to transfer). The word "MiniBob" below will probably be "FIELD".



8. The transferred files should end up in the "My Received Files" folder in the "My Documents" folder on the laptop, but that's not guaranteed. The application DocReader can be used to look at the PalmOS "doc files" on the laptop. Start DocReader (you may also have to look around to find it since PASSCAL is not organized enough to put things in standard places). Once it has been started use the usual Windows File|Open menu item to navigate to the location of the file you want to look at and open it.



(END)