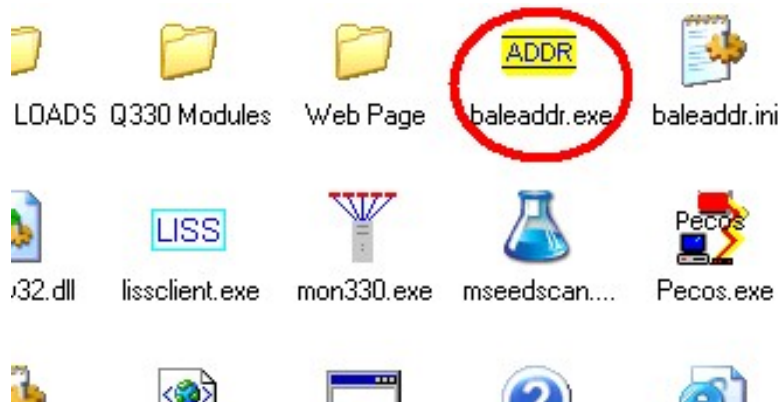


Q330 Baler Download Instructions
2005.332

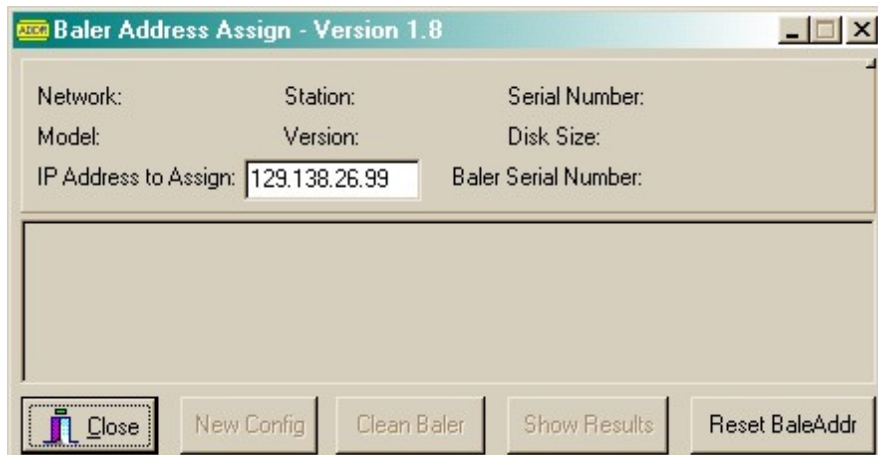
1. **Connect everything.** Power up and boot the laptop or other computer into Windows that has the Quanterra software on it that you will use to download the baler. Obtain a 12VDC power source (power supply or battery) and connect it to the 4pin connector on the baler download cable. Connect the baler download cable to the baler, and connect the RJ45 connector of the baler download cable to the download computer's Ethernet port.

Observe that the baler's Status LED blinks green every few seconds after power is connected to the baler.

2. **Start BaleAddr.** Open the Q330 folder on the download computer and double click on the BaleAddr icon.

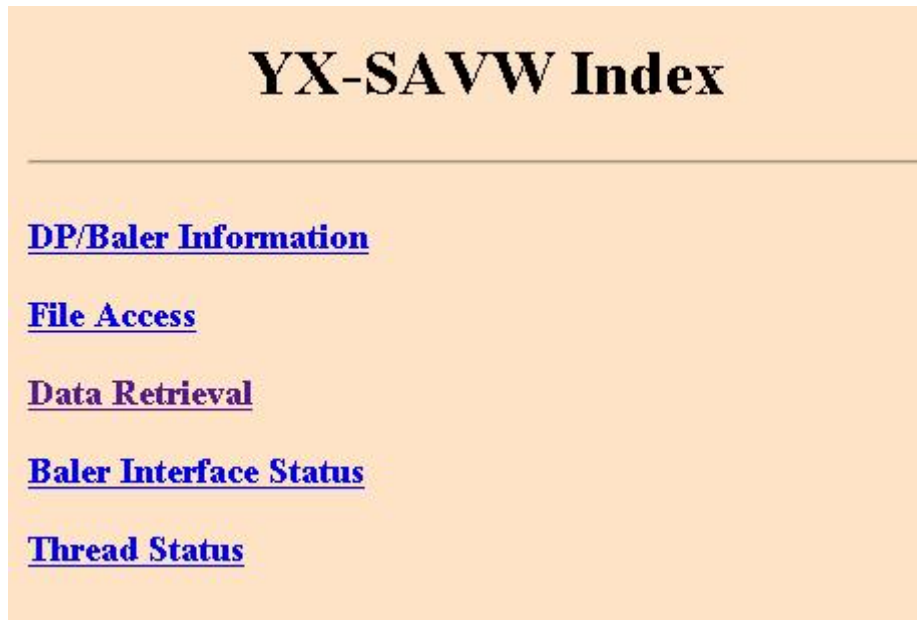


3. **Set the IP Address.** The baler communicates with the download computer using Ethernet. The download computer and the baler must (usually) have similar IP addresses for communication to happen. If it is not known obtain the IP address of the download computer by running the ipconfig command in an MS-DOS/Command window. Assume, for example, that the computer's address is 129.138.26.32. When the baler is started the BaleAddr program will set the baler's address to the value placed in the 'IP Address to Assign' field. For this example the IP address we set the baler to will have to match the first three tuples of the computer's IP address ("129.138.26" - i.e. the same subnet). The last tuple may be set to any number other than that of the download computer ("32"). We have used "99" in this example.



4. **Start the baler.** Press the ATTN button on the front of the baler and watch the LEDs. The Status LED should blink green/red several times. This means that the baler is booting. This can take about 30 seconds. The Ethernet Link LED should come on green, and the Ethernet Active LED should blink yellow periodically. When the baler is finished booting the Serial Number on the front of the baler should appear in the Serial Number field of BaleAddr, the network code for your experiment should show up in the Network field, and the station name where the data on this baler was recorded should show up in the Station field. The message "Baler OK" should eventually be displayed in the messages section of the BaleAddr program.

5. **Start a browser.** Leave the BaleAddr program running and start a browser like Internet Explorer. Type the IP address into the browser's Address field that was entered into the IP Address to Assign field in BaleAddr and hit the Enter key. The "home page" of the baler should be displayed. The network code and station name should appear at the top of the page.



6. **Click on Data Retrieval.** Clicking on this link will take you to the page below.

The image shows a web page titled "YX-SAVW Data Retrieval" on an orange background. It contains several input fields and buttons. The fields are: "Seed Name(s)" with a placeholder "??-???", "Record Limit", "Starting Time", "Ending Time", and "Filter by Station Name". Below these are two rows of buttons. The first row has "Download Data", "Data Availability", and "Into Binary File" with an adjacent input field. The second row has "Messages", "Timing", "Detections", "Calibrations", and "List Data Avail." buttons.

7. Download the data. Fill in the Seed Name(s) field with ??-??? as in the picture above. This tells the baler to send all of the data on its disk. Click the Download Data button. A standard Windows file location dialog box will be displayed. Navigate to the location where the data should be saved and click the OK button. A full 20GB disk will take about 45 minutes to download. All of the information on the disk will be consolidated into one file.

8. Shutdown the baler. When the file transfer is complete close the browser window. Click the Shutdown Baler button in BaleAddr. The green Status LED on the front of the baler will blink red/green every few seconds and then blink just green every few seconds when the baler has finished shutting down. Disconnect the baler. Connect another baler and repeat these instructions starting at Step 4 if there are more balers to download.

END