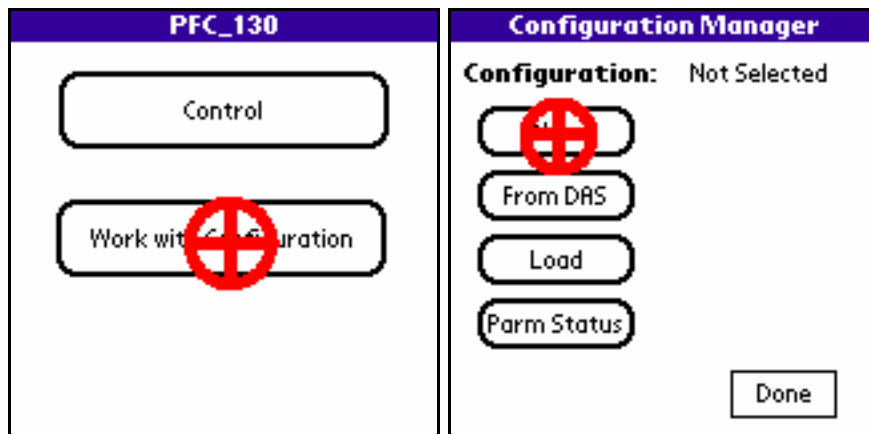


Writing The RT-130 Configuration From Scratch
CATSCAN Experiment
2004.288

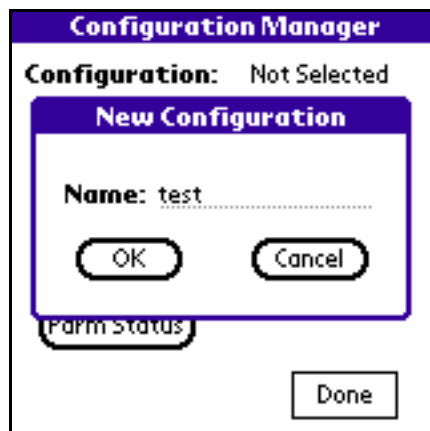
1. Find the PFC_130 application in the Launcher and tap on it to start the application. A startup splash screen will appear for a couple of seconds.



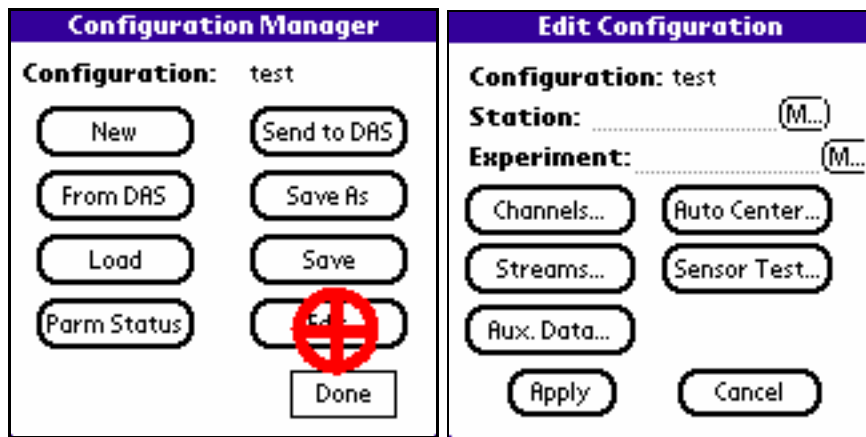
2. Select Work with Configuration. When the Configuration Manager form appears tap the New button.



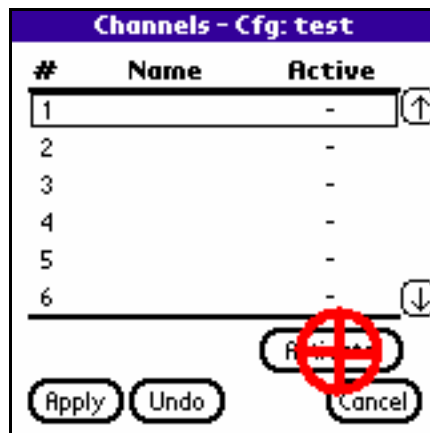
3. Enter a name for the configuration in the New Configuration dialog box and tap the OK button.



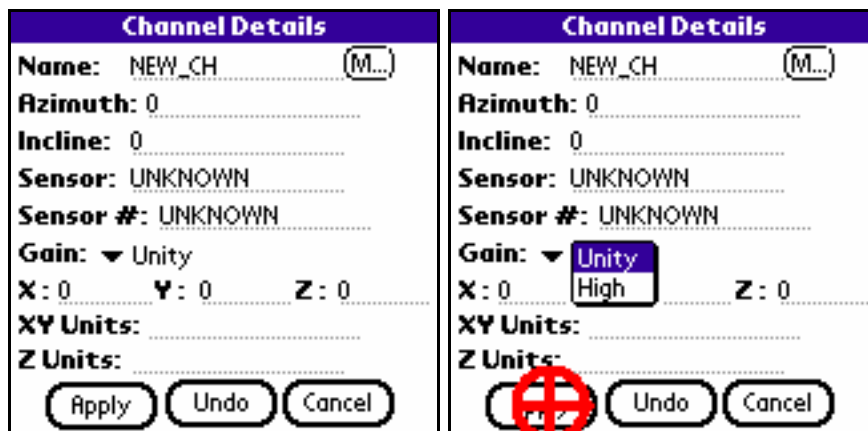
4. When the Configuration Manager form returns it will have four more buttons. Tap the Edit button to bring up the Edit Configuration form. On the Edit Configuration form you can enter information about an individual station and the experiment, but only if the information being incorrect is not going to cause problems later. PASSCAL usually recommends not relying on this information, but more on notes taken with pencil and paper.



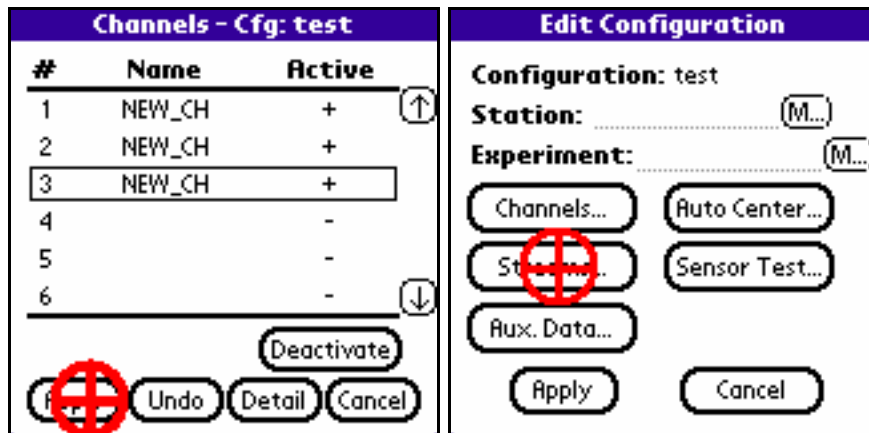
5. Tap the Channels... button to bring up the Channels form. Tap the channel number 1 line to select it as shown below. Tap on the Activate button.



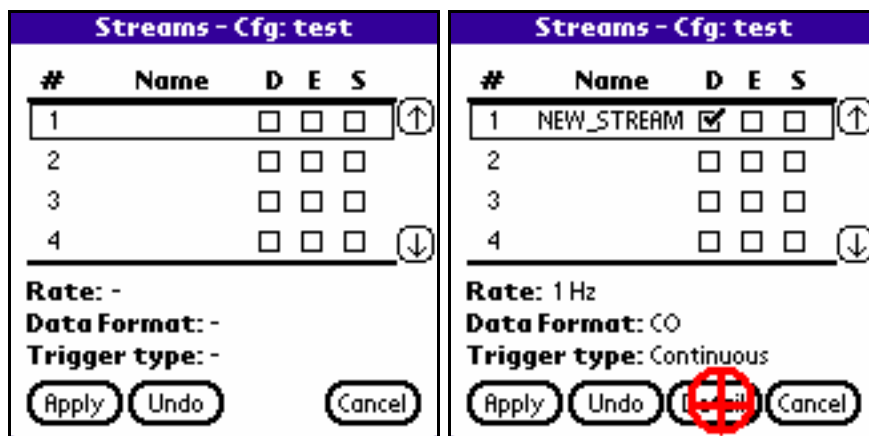
6. The only item that needs to be set on the Channel Details form is the Gain. Tap on the down arrow to the right of the Gain label and select the Unity setting from the popup menu. Tap the Apply button to return to the Channels form.



7. Repeat selecting, setting the gain (and any other items), and applying the changes. Tap the Apply button on the Channels form when finished editing the channel information. Back on the Edit Configuration form tap the Streams... button.



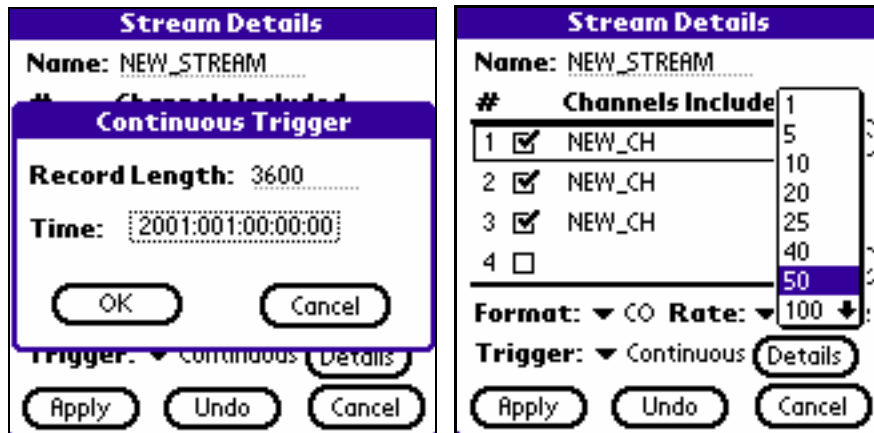
8. The Streams form works in a similar manner as the Channels form did. Activate stream 1 by tapping on the checkbox on line 1 that is below the letter "D" (These checkboxes designate where the data should be sent: D is for DAS/Disk, E is for Ethernet, and S is for serial port output). The application will fill in the name NEW_STREAM, and fill in a default sample rate, data format and trigger type. To change these tap the Detail button.



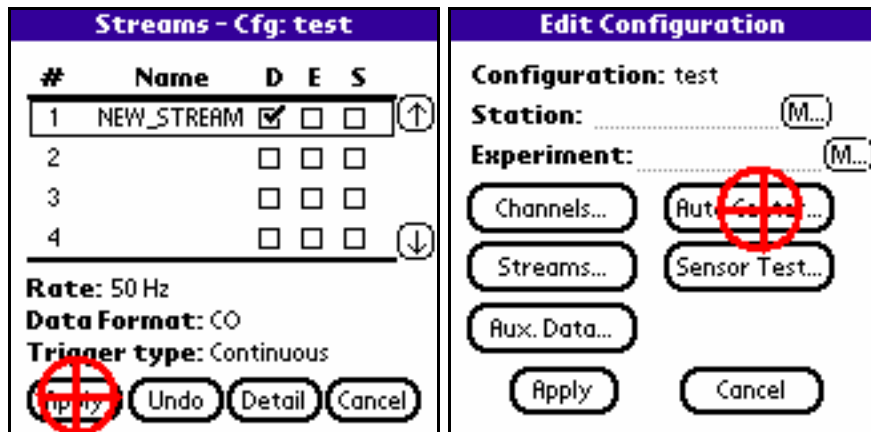
9. On the Stream Details form select the checkbox for channels 1, 2, and 3.



10. A format of CO (compressed) is OK. A Trigger setting of Continuous is also OK. Tap on the Details button and set the Record Length to 3600 on the Continuous Trigger dialog box. A future start time can also be set on this dialog box if needed, but it is usually left alone. Tap OK to return to the Stream Details display. Change the Rate setting by tapping on the down arrow to the right of the Rate label and selecting 50 (samples per second). Tap the Apply button when finished.



11. The Streams form should now have one data stream, a rate of 50sps, a continuous data format, and a trigger type of continuous. Tap the Apply button to return to the Edit Configuration form. Tap on the Auto Center... button to bring up the Auto Center form.



12. Tap on the down arrow to the right of the Enable label and select ON. Enter the number "10" in the field to the right of the Cycle Time label. This means that the RT-130 will send an auto-centering pulse to the attached sensor every 10 DAYS (not Hrs as is indicated on the form). None of the other settings function. Tap the Apply button to return.

13. Tap the Apply button on the Edit Configuration form to return to the Configuration Manager form. Tap the Save button to save the configuration settings using the configuration name that you entered back in Step 3. Click the Done button to return to the main menu.

14. The entered configuration will remain in use and available for sending to the RT-130s as long as you do not leave the PFC_130 application. If you leave the application you must select the Work with Configuration item and Load the desired configuration settings from the Load Configuration menu that will appear.

(END)