

Notes:

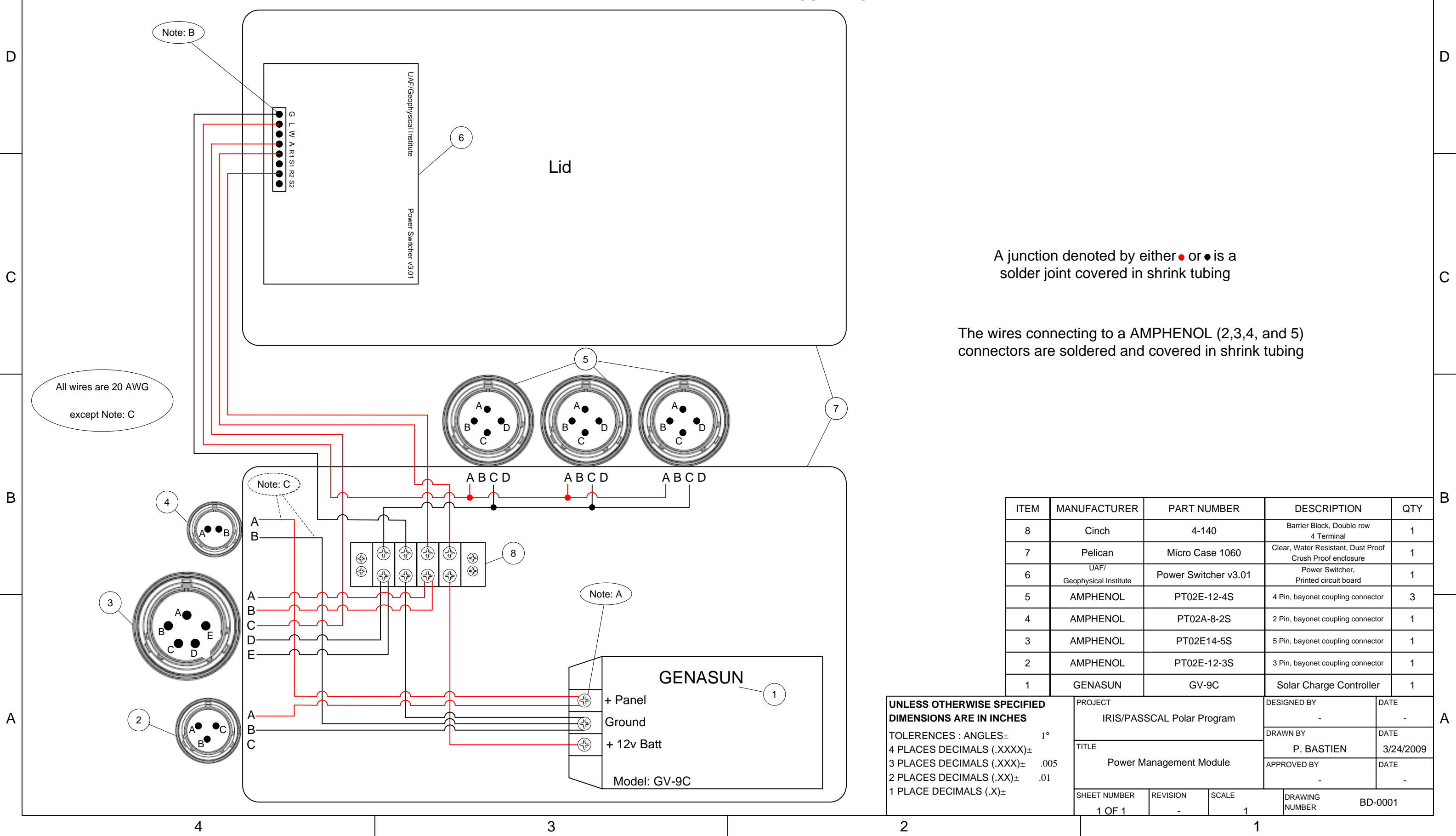
A. When a wire intersects a screw, the wire is attached via a ' Forked Crimp Termal, 22-16 AWG'

B. The wires to the PowerSwitcherv3.01 are soldered

C. These wires are 22 AWG, all others are 20 AWG

REV.	DESCRIPTION	DATE	BY
-	-	-	-
-	-	-	-

NOT TO SCALE
BLOCK DIAGRAM



A junction denoted by either ● or ● is a solder joint covered in shrink tubing

The wires connecting to a AMPHENOL (2,3,4, and 5) connectors are soldered and covered in shrink tubing

All wires are 20 AWG
except Note: C

ITEM	MANUFACTURER	PART NUMBER	DESCRIPTION	QTY
8	Cinch	4-140	Barrier Block, Double row 4 Terminal	1
7	Pelican	Micro Case 1060	Clear, Water Resistant, Dust Proof Crush Proof enclosure	1
6	UAF/ Geophysical Institute	Power Switcher v3.01	Power Switcher, Printed circuit board	1
5	AMPHENOL	PT02E-12-4S	4 Pin, bayonet coupling connector	3
4	AMPHENOL	PT02A-8-2S	2 Pin, bayonet coupling connector	1
3	AMPHENOL	PT02E14-5S	5 Pin, bayonet coupling connector	1
2	AMPHENOL	PT02E-12-3S	3 Pin, bayonet coupling connector	1
1	GENASUN	GV-9C	Solar Charge Controller	1

UNLESS OTHERWISE SPECIFIED
DIMENSIONS ARE IN INCHES

TOLERANCES : ANGLES± 1°
4 PLACES DECIMALS (.XXXX)±
3 PLACES DECIMALS (.XXX)± .005
2 PLACES DECIMALS (.XX)± .01
1 PLACE DECIMALS (.X)±

PROJECT IRIS/PASSCAL Polar Program		DESIGNED BY -	DATE -
TITLE Power Management Module		DRAWN BY P. BASTIEN	DATE 3/24/2009
SHEET NUMBER 1 OF 1		REVISION -	SCALE 1
DRAWING NUMBER BD-0001		APPROVED BY -	