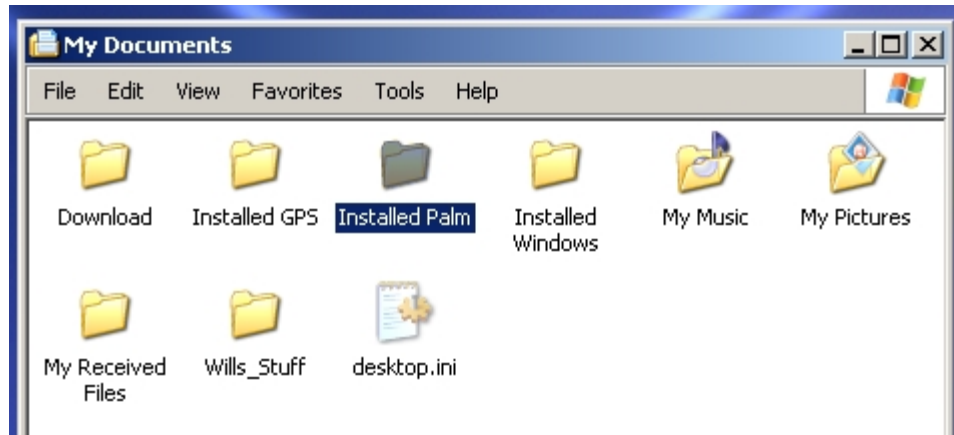


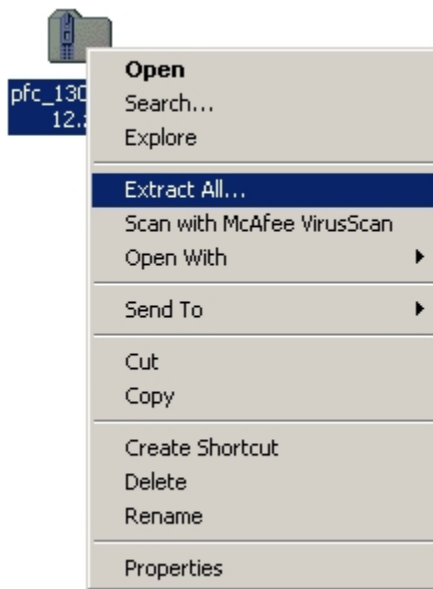
Updating/Installing Clie PalmOS Software 2004.028

This procedure should be used to install updated or new software to a Clie.

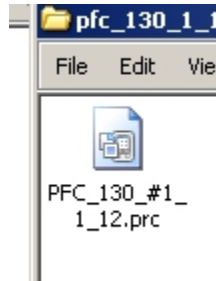
1. Download the new program to the desktop computer and place it in the My Documents\Installed Palm\the appropriate' folder (i.e. RT-130 applications in the 130 folder, Q330 applications in the Q330 folder, etc.).



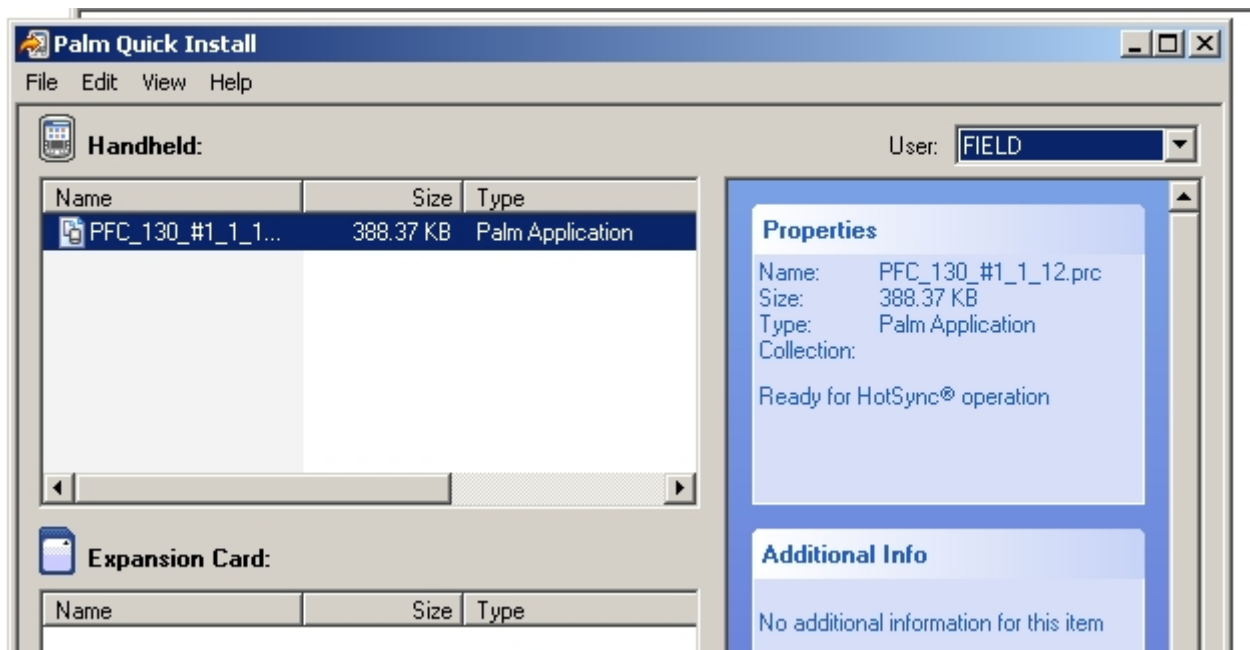
2. Unzip the software by right-clicking on the Zip file and selecting Extract All... from the context menu if necessary.



3. You may need to read some installation instructions, but generally you install files that end in .prc or .pdb to PalmOS units. Install the desired files by double-clicking on them.



4. Double-clicking each file will add it to the list in the Palm Quick Install application. When all files have been added check that the value for the User field is set to FIELD, You can close the Palm Quick Install window by clicking the "X" in the corner.



5. Now finish the installation of the software to the Clie by connecting it to the desktop and performing a HotSync. **IMPORTANT:** Make sure a hard reset has been done on the Clie before initiating the HotSync unless you really know what you are doing, or you may mess things up on the desktop computer. See the document HotSyncing A Clie To Reinstall All Software for further details.

(END)