

Beaming RT130 Configuration: Clie to Clie

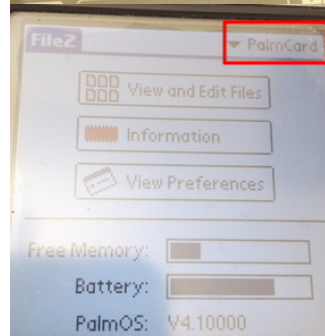
1. Position both Clies with infrared port facing each other, about 1" apart



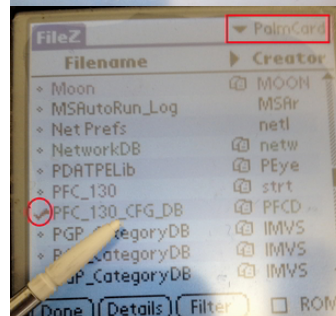
2. Run **FileZ** program (found with showing "all" on main screen) on the Clie with the PFC_130 configuration file you want to use.



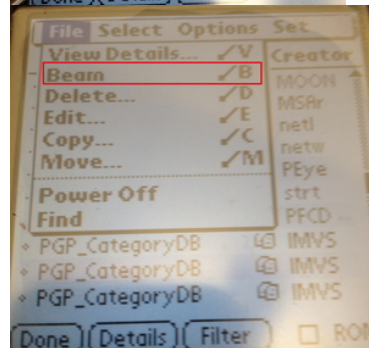
3. Select **View and Edit Files**. Make sure the drop-down menu on the top right says "PalmCard"



4. Choose the file "PFC_130_CFG_DB" to beam from file list. This database contains all of the saved PFC_130 configuration files.



5. Select **File->Beam** from pull-down menu



6. Receiver Clie will ask to accept file.
Answer yes.

Repeat if you would like to beam other files from one Clie to another Clie.